









PRIMARY RESEARCH ARTICLE

Regional disparity in extinction risk: Comparison of disjunct plant genera between eastern Asia and eastern North America

Houjuan Song^{1,2,3}  | Alejandro Ordonez^{2,3}  | Jens-Christian Svenning^{2,3}  |
 Hong Qian⁴  | Xue Yin⁵  | Lingfeng Mao⁶  | Tao Deng⁷  | Jian Zhang^{1,3} 

¹Zhejiang Tiantong Forest Ecosystem National Observation and Research Station, Research Center for Global Change and Ecological Forecasting, School of Ecological and Environmental Sciences, East China Normal University, Shanghai, China

²Section for Ecoinformatics and Biodiversity, Department of Biology, Aarhus University, Aarhus C, Denmark

³Center for Biodiversity Dynamics in a Changing World (BIOCHANGE), Department of Biology, Aarhus University, Aarhus C, Denmark

⁴Research and Collections Center, Illinois State Museum, Springfield, IL, USA

⁵State Key Laboratory of Biocontrol and School of Life Sciences, Sun Yat-sen University, Guangzhou, China

⁶Co-Innovation Center for Sustainable Forestry in Southern China, College of Biology and the Environment, Nanjing Forestry University, Nanjing, China

⁷CAS Key Laboratory for Plant Diversity and Biogeography of East Asia, Kunming Institute of Botany, Chinese Academy of Sciences, Kunming, China

Correspondence

Jian Zhang, Zhejiang Tiantong Forest Ecosystem National Observation and Research Station, Research Center for Global Change and Ecological Forecasting, School of Ecological and Environmental Sciences, East China Normal University, 200241 Shanghai, China.
 Email: jzhang@des.ecnu.edu.cn

Funding information

National Natural Science Foundation of China, Grant/Award Number: 32071538; Shanghai National Natural Science Foundation, Grant/Award Number: 202007-202306; Aarhus Universitets Forskningsfond Grant, Grant/Award Number: AUFF-F-2018-7-8; VILLUM FONDEN, Grant/Award Number: 16549

Abstract

Climate and land cover changes are increasing threats to biodiversity globally. However, potentially varying biotic sensitivity is a major source of uncertainty for translating environmental changes to extinction risks. To reduce this uncertainty, we assessed how extinction risks will be affected by future human-driven environmental changes, focusing on 554 species from 52 disjunct plant genera between eastern Asia (EAS) and eastern North America (ENA) to control for differences in environmental sensitivity at the genus level. Species distribution models were used to estimate and compare the vulnerability of species in disjunct genera between the two regions under two climate and land cover change scenarios (RCP2.6 and RCP8.5) in the 2070s, allowing to assess the effects of differences in climate and land cover pressures. Compared with ENA, stronger pressures from climate and land cover changes along with smaller range sizes in EAS translate into a larger number and proportion of species in disjunct genera becoming threatened by the 2070s. These regional differences are more pronounced under a best-case climate scenario (RCP2.6), illustrating that strong climate change (RCP8.5) may override any regional buffer capacities. The main variables determining extinction risks differed between the two continental regions, with annual temperature range and cropland expansion being important in EAS, and annual precipitation being important in ENA. These results suggest that disparities in regional exposure to anthropogenic environmental changes may cause congeneric species with relatively similar sensitivity to have different future risks of extinction. Moreover, the findings highlight the context-specific nature of anthropogenic effects on biodiversity and the importance of making region-specific policies for conservation and restoration in response to the intensifying global changes.

KEYWORDS

climate change, disjunct genera, extinction risk, land cover change, range shifts, species distribution modeling

1 | INTRODUCTION

According to the latest biodiversity assessments of the Intergovernmental Science-Policy Platform on Biodiversity and Ecosystem Services (IPBES) and the International Union for Conservation of Nature (IUCN), species extinction risk is accelerating globally (IPBES, 2019; IUCN, 2019). Increasing rates of human-driven habitat loss and climate change are recognized as two of the primary drivers of the observed and forecasted acceleration in species extinction (Newbold, 2018; Peters et al., 2019; Trisos et al., 2020). Although more and more studies have been focusing on the effects of climate and land cover changes on species loss, how future human-driven changes to the environment will translate into extinction risks (Hannah et al., 2020; Urban, 2015) remains unknown.

Extinction risks are the result of multiple interacting factors (Kling et al., 2020; Parmesan, 2006), including disparities in species' exposure to anthropogenic environmental changes and differences in species' sensitivity to climate change across different biotas (Cardinale et al., 2018; Dawson et al., 2011; Sax & Gaines, 2003). One way to separate the effects of these factors is to compare areas experiencing different magnitudes of anthropogenic pressures while controlling for differences in biotic sensitivity to these changes. In this circumstance, differences in regional extinction risks would purely reflect disparities in exposure to anthropogenic pressures.

Here, we use this approach to control for the differences in sensitivity and use the gradient in future exposure to environmental change across continents to assess how these may drive disparities in extinction risks. Specifically, we control for differences in biotic sensitivity by focusing on congeneric species from disjunct plant genera in eastern Asia (EAS) and eastern North America (ENA) due to the niche conservatism at the genus level and the conservation of niche above the species level that are critically important for conserving biodiversity (Hadly et al., 2009). Hereby, this system serves as a natural experiment for assessing the link between environmental changes and extinction risks. The EAS-ENA disjunct genera originated from the same Arcto-Tertiary flora, broadly distributed across the Northern Hemisphere during the Paleogene and Neogene (Tiffney, 1985; Wolfe, 1975), but now only occur in EAS and ENA. This group of plants contributes to the high floristic similarity between EAS and ENA, stimulating important correspondence between Charles Darwin and Asa Gray due to the floras of EAS and ENA being more similar to each other than either was to western North America based on the floristic data available at that time (Boufford & Spongberg, 1983). Although the EAS-ENA disjunct genera are currently distributed in different latitudes within each continental region, climate associations of species within each EAS-ENA disjunct genus are well matched

between the two continental regions (Qian et al., 2017; Qian & Ricklefs, 2004; Ricklefs & Latham, 1992), even though the disjunct populations have been separated between the two continents for millions of years (Wen, 1999). The EAS-ENA disjunct genera have served as a "model" system in addressing ecological and biogeographic questions (e.g., Qian & Ricklefs, 2000, 2004; Ricklefs & Latham, 1992), particularly for questions that require accounting for ecological differences between the compared groups (Qian & Ricklefs, 2000; Qian et al., 2007). Therefore, the well-documented niche conservatism in EAS-ENA disjunct genera at the genus level (e.g., Qian & Ricklefs, 2004; Ricklefs & Latham, 1992) can be translated into a fixed biotic sensitivity to environmental changes (notably in climate), allowing for a robust test of the effect of exposure on vulnerability.

To assess species extinction risks during the Anthropocene, it is important to consider the combined effects of climate and land cover changes (Titeux et al., 2016). Their combined effects are expected to cause elevated risks in species extinction and potentially major changes in the regional patterns of species richness (Newbold et al., 2019; Urban, 2015; Zhang et al., 2017). Thus, we considered climate and land cover changes simultaneously in the present study. Importantly, climate and land cover changes show different trends in EAS and ENA (Loarie et al., 2009; Newbold et al., 2015) due to disparate human population growth trends and differences in economic development (Guo, 1999; Seto et al., 2011). Notably, under a business-as-usual scenario, EAS is expected to experience larger precipitation and lower temperature changes across this century than ENA (Loarie et al., 2009). Moreover, faster rates of urban expansion in the next decades are expected in EAS, compared to ENA (Seto et al., 2012). The difference in the expected changes in climate and land cover between the two regions implies regional differences in species' exposure to these stressors.

In this study, 554 species from the 52 plant genera disjunctly distributed between EAS and ENA are used to determine differences in species extinction risks. We compare the range responses of these species under two greenhouse gas emission scenarios for the 2070s. For this, we model and compare current and future distributions of the 554 species, hereby determining regional differences in extinction risks of species in the 52 disjunct genera, while controlling for differences in sensitivity to climate and habitat changes. Based on the observed differences in climatic and land cover changes between EAS and ENA, we expect that extinction risk will be higher in EAS than in ENA due to expected stronger future shifts in climate (Loarie et al., 2009) and ongoing rapid land degradation (Seto et al., 2011, 2012) in EAS. Support for these predictions would highlight the need to make region-specific policies for biodiversity conservation and restoration under future global change.

2 | MATERIALS AND METHODS

2.1 | Study areas

We referenced the previous literature (Qian & Ricklefs, 2000) to define the geographic boundaries of EAS and ENA. EAS (18–55°N, 92–145°E) includes the majority of China (except for the provinces of Xinjiang, Gansu, Qinghai, Ningxia, and some counties of Xizang and Inner Mongolia), South Korea, North Korea, Japan, and the southernmost part of the Russian Far East (including Bureja, Daurian, Lower Zea, South Sakhalin, Ussuri). ENA (24–53°N, 57–100°W) includes the eastern parts of six states of the United States, including North Dakota, South Dakota, Nebraska, Kansas, Oklahoma, and Texas, and all the states east of them as well as New Brunswick and Nova Scotia provinces and southern parts of Quebec and Ontario provinces in Canada.

2.2 | Species distribution data

We focused on the species of disjunct plant genera in EAS and ENA (Qian & Ricklefs, 2000). We only included occurrence records within the native range of each species. Data for species in China were compiled from several sources with occurrences primarily at the county level or smaller geographic areas (such as nature reserves), which included NSII (China's National Specimen Information Infrastructure, <http://www.nsii.org.cn>), GBIF (Global Biodiversity Information Facility, www.gbif.org), and a dataset reported in Lu et al. (2018). Data for species distributions in Korea were compiled from Lee (1980) and Lee (1996), Flora of Korea Editorial Committee (2015–2016), and distributional records with GBIF. Data for species distributions in Japan were compiled from Kubota et al. (2014), Nakamura et al. (2009), local and prefecture floras (<http://jousyuu2.sakura.ne.jp/sankoubunken.html>), and distributional records with GBIF. Data for species distributions in the Russian Far East were compiled from Charkevich (1985–1996). Data for species distributions in the United States and Canada were compiled from county-level distributions with the databases of the Biota of North America Program (<http://bonap.org>) and the U.S. Department of Agriculture's Plants (<https://plants.sc.egov.usda.gov/java/>), and a large body of the botanical literature cited in appendix A in Qian et al. (2007). All species names were standardized following World Flora Online (www.worldfloraonline.org).

Under the Behrmann cylindrical equal-area projection, we divided the two regions into 50 km × 50 km grid cells (approximately equal to the size for most counties in the two continental regions). Only species with ≥ 5 occurrence records within a region were retained in the analyses to ensure the predictive ability of species distribution models (SDMs; Pearson et al., 2007). As a result, this study included 554 species (accounting for 97% of total species number) from 52 disjunct plant genera (Dataset S1), with 451 species in EAS and 104 species in ENA. There are no species in these genera that are currently shared by the two continental regions

except for *Phryma leptostachya*, for which EAS and ENA each possess a different subspecies. Among them, 78% (350 species) in EAS and 61% (63 species) in ENA are woody plants, and 22% (101 species) in EAS and 39% (41 species) in ENA are herbaceous plants. To compare climatic niches of the disjunct genera between the two continental regions at the genus level, we mapped the occupied area of the currently climatic space (mean annual temperature [MAT] vs. total annual precipitation [PREC]) between EAS and ENA (Figure S1). Figure S1 shows that many disjunct genera have relatively similar climate associations between the two continental regions, suggesting high similarity in climatic requirements and hence sensitivity at the genus level.

2.3 | Environmental variables

Current (1950–2000) and future (2061–2080) climate variables in EAS and ENA at 10 arc-minutes were obtained from the WorldClim database (Hijmans et al., 2005). For future climate, the BCC-CSM1-1, CCSM4, and GFDL-CM3 coupled global climate models, which are widely used for predicting species extinction risk in East Asia and North America (Stralberg et al., 2015; Tang et al., 2018; Zhang et al., 2017), were adopted under two levels of greenhouse gas emission scenarios by the 2070s: RCP2.6 as low level (global mean temperature will stabilize at ~1.6°C higher than the preindustrial period, which is close to the 1.5°C climate target) and RCP8.5 as high level (~4.8°C higher in temperature than the preindustrial period).

Current and future land cover data were extracted from Land-Use Harmonization (LUH2, <http://luh.umd.edu>; Hurtt et al., 2011). It consists of estimates of the land cover proportion at 0.25° resolution for the years 850–2100. We reclassified 12 LUH categories into five major types, including forested, non-forested, crop, urban, and grazing lands. Elevational range was used in this study as a proxy of habitat heterogeneity (Rahbek & Graves, 2001). Elevation data were obtained from the EarthEnv-DEM90 digital elevation model at 90 m resolution (<http://www.earthenv.org/DEM>). All these environmental variables were disaggregated to a 50-km spatial resolution. To reduce multicollinearity, the variables with the absolute value of Pearson correlation coefficient < 0.7 were retained (Dormann et al., 2013). Finally, five climate variables (MAT, PREC, temperature annual range [TEMP_range], mean temperature of the wettest quarter [TEMP_wet], and precipitation seasonality [PREC_season]), five land cover variables, and elevational range were used in this study.

2.4 | Species distribution models

Species distribution models have been widely used to project the potentially suitable habitats and extinction risk of species (Elith & Leathwick, 2009; Rosenzweig et al., 2008). In this study, an ensemble of four SDM algorithms (maximum entropy, generalized linear models, generalized boosting model, and random forest; Moat et al., 2019; Razgour et al., 2019; Zhang et al., 2017) was used to project suitable

habitats under current and future RCP2.6 and RCP8.5 scenarios by the 2070 s. To evaluate and calibrate each model, we randomly divided our data into two parts: 80% of the initial data were used as training data to build models and the remaining 20% of the data were used to validate the models (Franklin & Miller, 2010) and then used true skill statistic (TSS) to evaluate the predictive accuracy of models (Allouche et al., 2006). To effectively balance between omission and commission errors in model prediction, this procedure was repeated five times for species with >1000 occurrence records, and 10 times for all other species (Barbet-Massin et al., 2012). We generated five sets of pseudo-absences by randomly selecting absence with the same number as presence records from the whole study area (Barbet-Massin et al., 2012). All calibrated models with TSS larger than 0.5 were retained (Thuiller et al., 2009; Figure S2). These retained models were then projected under the current conditions and under the two RCP scenarios for the 2070 s at a 50-km spatial resolution, using ensemble forecasting classified into binary presence-absence predictions of suitable habitat using the threshold that maximize TSS (Gallien et al., 2010). All functions for SDMs and ensemble forecasts were carried out using the R package "BIOMOD2" (Thuiller et al., 2009).

Considering that the SDMs commonly overpredict distributions, we used a buffered minimum convex polygon (MCP) to clip the SDM range predictions following the approach of Kremen et al. (2008). For current conditions, 200 km was considered as an "optimal" MCP buffer distance (VanDerWal et al., 2009). For future conditions, we extended the distance based on a maximum dispersal rate of 20 km per decade, starting at the buffer edge (Chen et al., 2011). This analysis was performed using the "gConvexHull" and "gBuffer" functions in the R package "rgeos" (<https://r-forge.r-project.org/projects/rgeos>).

2.5 | Statistical analysis

To investigate the shifts in species richness between the current and future periods, we mapped the changes in species richness based on the binary models of potentially suitable habitats. To detect the expected direction and distance of range shifts of each species, we calculated the location of the geographic center (centroid) of each species' range for current and future periods, and the directions and distances were measured based on the changes between current and future centroid. This analysis was conducted using the function "gCentroid" in the R package "rgeos."

The percentage loss of current suitable habitat (LSH) and relative change in total area of suitable habitat (CSH) was used as the proxy of species' vulnerability to future climate and land cover changes (Thuiller et al., 2011). LSH and CSH were calculated as follows: $LSH = 100 - (\text{overlap}(\text{AREA}_{\text{Future}}, \text{AREA}_{\text{Current}}) / \text{AREA}_{\text{Current}} \times 100)$, and $CSH = (\text{AREA}_{\text{Future}} - \text{AREA}_{\text{Current}}) / \text{AREA}_{\text{Current}} \times 100$, where $\text{AREA}_{\text{Future}}$ and $\text{AREA}_{\text{Current}}$ are the area of future and currently suitable habitats, respectively. To estimate and compare species extinction risks between the two regions, we calculated the number of species and the proportion of total species under greater than 30%, 50%, and 80% of LSH and CSH. Species extinction risk in

each region was defined as the percentage of species that have lost over 30% of their suitable habitat (IUCN, 2019). We also summarized changes in species range (CSH) due to climate and land cover changes across a genus-level phylogeny for the EAS-ENA disjunct genera, which was extracted from the megaphylogeny reported by Smith and Brown (2018).

To disentangle potential drivers of extinction risk in the two regions, beta regression in R package "betareg" (Cribari-Neto & Zeileis, 2010) was used to explore the bivariate relationships between LSH and each explanatory variable at the species level. Beta regression is commonly used to model proportional data restricted between 0 and 1 that are typically non-normal and heteroscedastic (Cribari-Neto & Zeileis, 2010). The explanatory variables were computed as changes in predictors between the current and future periods. For each species, the change in each variable used for beta regression is the average in difference of all grids with losing suitable habitats between current and future predictions. To eliminate the unit dimensions of predicted variables for comparing their relative importance, all variables were standardized to have a mean of 0 and standard deviation of 1.

To test for differences in loss of range sizes among congeneric species between the two regions, we conducted a pairwise phylogenetic generalized least squares analyses of \log_{10} -transformed current and loss of range size of the 52 disjunct genera shared by the two regions. This method accounts for the nonindependence of species in the same genera. This analysis was implemented with the R package "ape" (<http://ape-package.ird.fr>). A chi-squared test was used to evaluate the correlation of range size loss between the two regions. All the data were prepared and analyzed in R v3.6.3 (R Core Team, 2019).

3 | RESULTS

3.1 | Geographical shifts in species richness

Under the RCP8.5 scenario, the net losses in species richness in EAS and ENA were 123 (27%) and 21 (20%) species per 50 km × 50 km grid cell, respectively (Figure 1). Under the two evaluated scenarios for the 2070s, the largest species loss was projected to be at low latitudes (below 30°N) in EAS and mid-low latitudes in ENA (below 40°N; Figure 1) and some grid cells were projected to lose all species (Figure S3). Southern and southwestern parts of EAS and the Mississippi coastal plain in ENA were also predicted to have large declines in species richness. Notably, under RCP8.5 in EAS, 19 and 13 species were predicted to lose all their suitable habitat and become regionally extinct under the assumption of no migration and universal migration, respectively.

3.2 | Disparate species extinction risks of disjunct genera between EAS and ENA

Under the RCP8.5 scenario, 49% and 39% species in the disjunct genera in EAS and ENA would be at risk of extinction (LSH >30%)

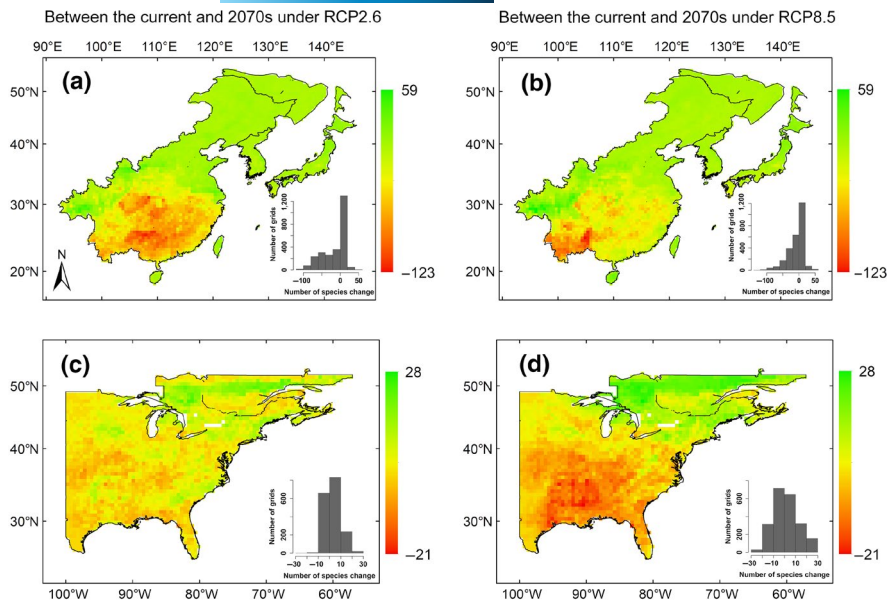


FIGURE 1 Forecasted changes in species richness of the disjunct plant genera between the current (the 2000s) and the 2070s under two greenhouse gas emission scenarios for eastern Asia (EAS; a, b) and eastern North America (ENA; c, d). The species distribution model results under universal migration are shown here, hence representing potential ranges. The histograms (bottom-right insets) show the frequency of species richness change between the current and the 2070s [Colour figure can be viewed at wileyonlinelibrary.com]

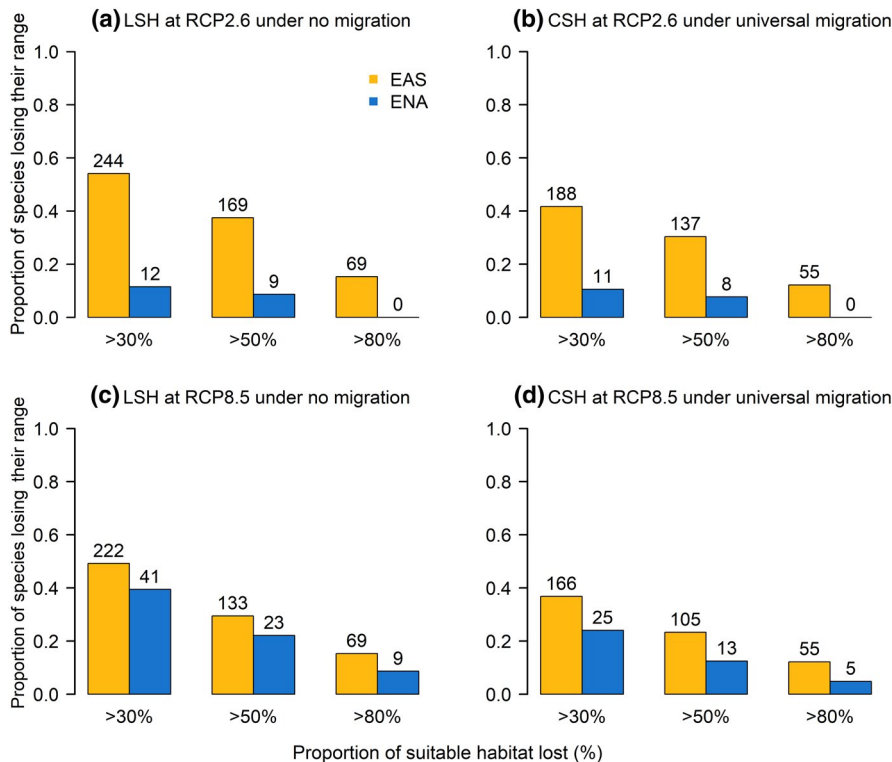


FIGURE 2 The proportion of modeled suitable habitat loss of species by the 2070s under two emission scenarios. The left column is the relative loss of current suitable habitat (LSH) assuming no migration, and the right one is the relative change of suitable habitat (CSH) assuming universal migration. The number above the bar is the number of species losing their range. EAS, eastern Asia; ENA, eastern North America [Colour figure can be viewed at wileyonlinelibrary.com]

by the 2070s, respectively (Figure 2). Differences in the proportion of species at extinction risk between EAS and ENA are more pronounced under a best-case climate scenario (RCP2.6) for both LSH (54% in EAS vs. 12% in ENA) and CSH (42% in EAS vs. 11% in ENA; Figure 2a,c). The analysis of CSH across a genus-level phylogeny (Figure 3) confirmed that changes in the suitable habitat will differ between the two regions for most of the disjunct genera, with those in EAS experiencing larger reductions than their counterparts in ENA (most pairs under the 1:1 line in Figure 4d,e).

3.3 | Drivers of regional disparity in species extinction risks

In EAS, the changes in annual temperature range, cropland, and non-forest expansion showed positive relationships with LSH (Table 1). In contrast, in ENA, LSH was significantly and positively associated with annual precipitation and cropland. Moreover, human pressures have greater impacts on LSH in EAS due to the higher human anthropogenic pressure in this region (Table 1; Figures S4 and S5). For example, under a high-emission scenario (RCP8.5), EAS will experience

greater intensification of land uses, and a much larger expansion in non-forest and cropland when compared with ENA. For urban land, although the rate of urban expansion is lower in EAS than in ENA, EAS will mostly experience greater expansion extent than ENA.

For most congeneric species, the range size of a species in the same disjunct genus is larger in ENA than in EAS under both current

and future conditions (Figure 4a–c). There were significant correlations between LSH of congeneric species in the two regions, yet the genera in EAS are forecasted to experience a larger loss in species range size. In addition, LSH was reduced with increasing range size in both regions, but with a sharper reduction in ENA (Figure 5). A similar result of all study species in two regions was documented (Figure S6).

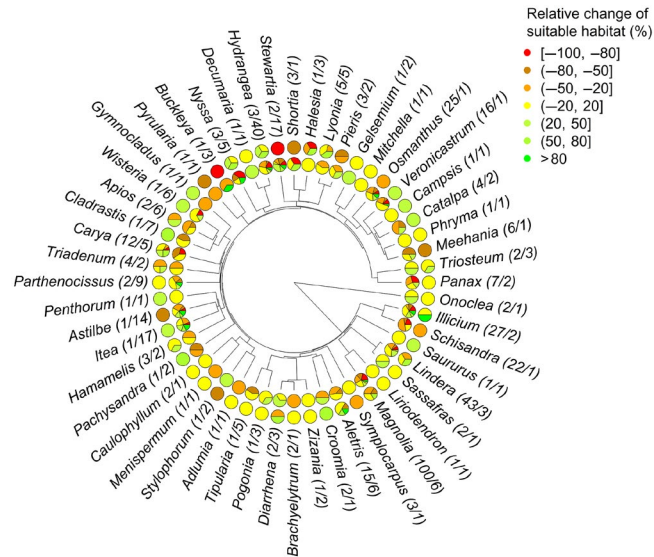


FIGURE 3 Projected species changes in all EAS-ENA disjunct plant genera between the current and the 2070s (RCP8.5). Genus names are labeled on the phylogeny. Colors in pie charts show the percent of species relative to species richness within each of seven different habitat change levels. The inside pie charts represent EAS species, and the outside charts represent ENA species. Two numbers in parentheses after a genus name are the numbers of species in EAS (the internal number) and ENA (the external number). “(” and “)” mean that the boundary value is not included and included in the division interval, respectively. EAS, eastern Asia; ENA, eastern North America [Colour figure can be viewed at wileyonlinelibrary.com]

4 | DISCUSSION

The highly elevated rates of species loss due to human pressures continues to raise concern (e.g., IPBES, 2019), yet the link between environmental changes and species extinction risk is still poorly understood. One complicating factor is the potential for regional differences in biotic sensitivity to environmental changes (Cardinale et al., 2018; Dawson et al., 2011). In this study, we took a natural experiment approach to assess whether regional differences in intensity in environmental changes drive disparity in species extinction risks, controlling for differences in biotic sensitivity at the genus level. Our analyses showed marked differences in extinction risks as well as clear differences in potential drivers of extinction risks between the two study regions, consistent with different magnitudes of environmental changes. Compared with ENA, stronger pressures from climate and land cover changes along with smaller range sizes in EAS translated into a larger number and proportion of species in this region projected to become threatened by the 2070s.

The impacts of climate and land cover changes on biodiversity have been predicted to vary markedly across different regions (Newbold et al., 2019). Our results provide evidence for regional differences in extinction risks of species, in line with previous studies (Collen et al., 2006; Thomas et al., 2004; Thuiller et al., 2005; Urban, 2015), but here these differences can be clearly attributed to dissimilarities in exposure to anthropogenic pressures by controlling for

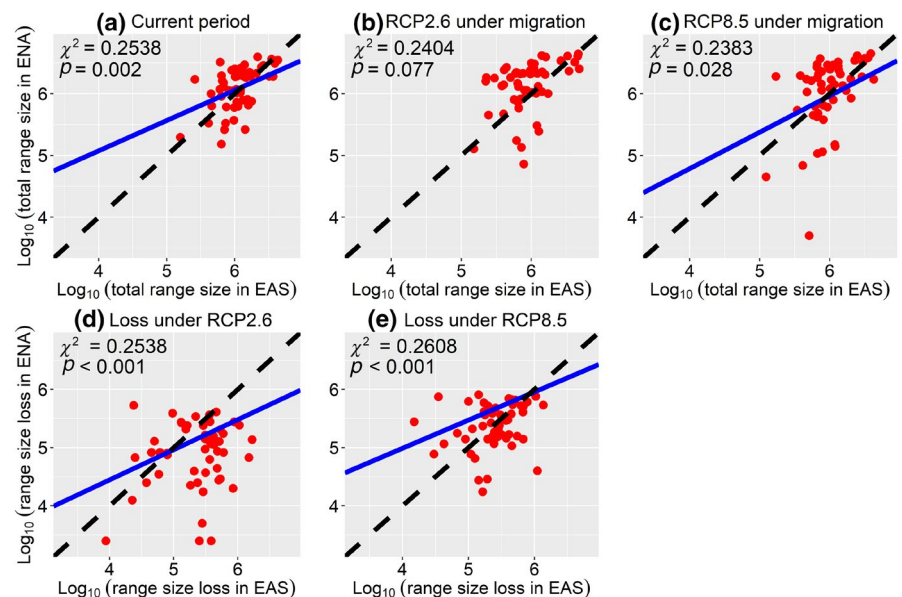


FIGURE 4 Scatter plots showing the relationships of current range size (a), and future range size (b, c) as well as range size loss under two emission scenarios (d, e) between the two regions. EAS, eastern Asia; ENA, eastern North America [Colour figure can be viewed at wileyonlinelibrary.com]

	EAS			ENA		
	Coef.	Odds ratio (CI)	Pseudo r^2	Coef.	Odds ratio (CI)	Pseudo r^2
TEMP_range	1.046***	2.85 (2.38–3.41)	0.175	0.078	1.08 (0.65–1.81)	0.000
PREC	-0.114	0.89 (0.77–1.03)	0.001	0.892***	2.44 (1.95–3.05)	0.262
Non-forest cover	1.356***	3.88 (2.84–5.32)	0.019	-0.053	0.95 (0.82–1.09)	0.014
Urban cover	-0.316***	0.73 (0.62–0.86)	0.046	0.379	1.46 (0.73–2.91)	0.011
Cropland cover	1.723***	5.60 (4.30–7.29)	0.207	0.671*	1.96 (1.04–3.69)	0.040

Note: Standardized regression coefficients (Coef.) and pseudo r^2 are given.

Abbreviations: CI, confidence interval; PREC, annual precipitation; PREC_season, precipitation seasonality; TEMP_range, temperature annual range.

* $p < 0.05$; ** $p < 0.01$; *** $p < 0.001$.

TABLE 1 Bivariate relationships between the percentage of current suitable habitat loss (LSH) of the species in the EAS–ENA disjunct plant genera and changes in the explanatory variables based on beta regression models under RCP8.5 emission scenario in eastern Asia (EAS) and eastern North America (ENA)

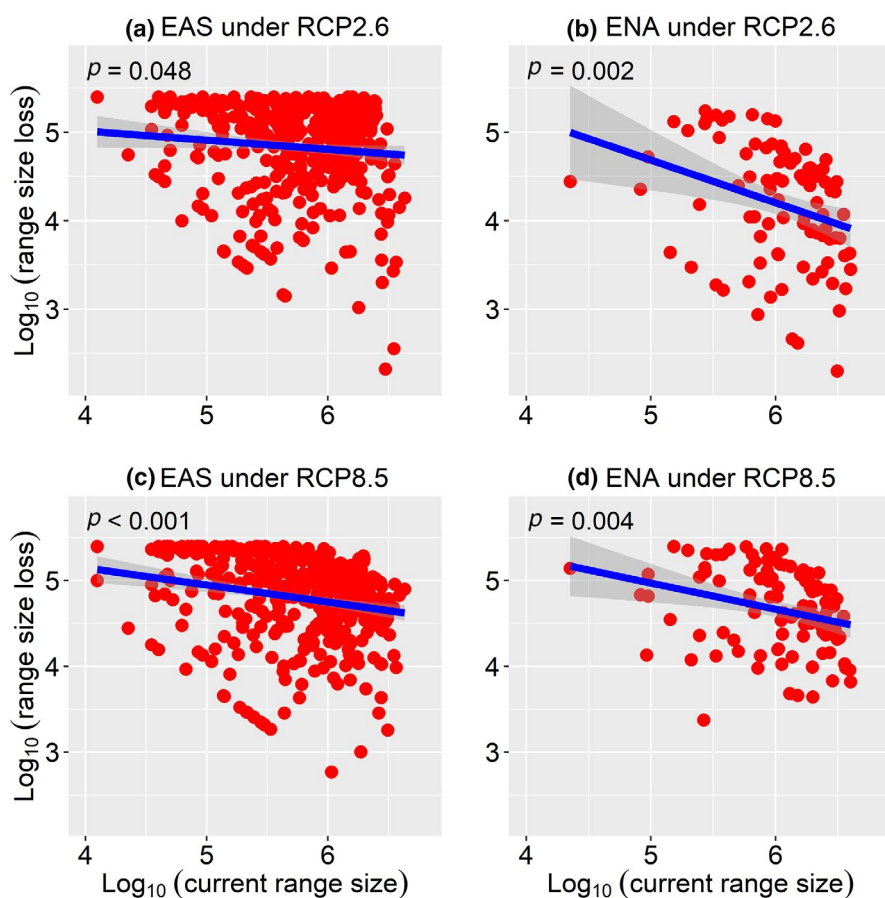


FIGURE 5 Scatter plots showing the relationships between range loss and current range size under RCP2.6 (a, b) and RCP8.5 (c, d) in eastern Asia (EAS) and eastern North America (ENA) [Colour figure can be viewed at wileyonlinelibrary.com]

biotic differences via focusing on EAS–ENA disjunct plant genera. The discrepancy of forecasted species loss in the disjunct genera between EAS and ENA is most pronounced under the low-emission scenario RCP2.6. This likely reflects that the high-emission scenario (RCP8.5 in our study) constitutes a generalized ecological disruption due to the exposure of most species to climate conditions exceeding their realized niche limits. In this case, environmental pressures are

so severe that they overwhelm regional differences in buffer capacity (Trisos et al., 2020).

There were clear differences in the effects of climate change as drivers of extinction risks between EAS and ENA. Although the main areas of species loss in southern parts of both regions are expected due to the fact that EAS–ENA disjunct taxa tend to occupy temperate regions (Qian & Ricklefs, 2000), the climatic drivers of species

loss are different. In EAS, the main areas of species loss are those located in areas with large increases in annual temperature range (Figures S4 and S5) and are not affected by changes in precipitation. In contrast, in ENA, annual precipitation drives the relative loss of currently suitable habitats (Table 1; Figures S4 and S5). Our results coincide with the prediction by Pelletier et al. (2018) that the importance of annual temperature range on species loss is larger in Asia than that in North America.

Changes in land cover in both regions contribute critically to the loss of suitable habitats. The expansions for cropland and non-forest land were confirmed to increase the loss of suitable habitats in EAS, with the role of cropland much the strongest (Table 1). One reason for this is the rapidly growing human population (Feng et al., 2017) and future continuous expansion of cropland due to intensive agricultural technologies in EAS. These changes will result in further biodiversity decline due to substantial loss of natural habitats and increases in habitat fragmentation (Seto et al., 2012). In ENA, increasing cropland also drives species extinction risks, but here the contribution of cropland is far less than the contribution of precipitation. In EAS, urban expansion has a moderate effect on the extinction risk of species in the disjunct genera. This likely reflects that the regions with high risks (e.g., mountainous areas of southwestern China) are forecasted to be largely unaffected by urbanization directly (Figures S4 and S5), consistent with the global forecasts of patterns of urban expansion by Seto et al. (2012). In addition, there was a slightly higher risk of species extinction with LSH >30% or >50% in EAS under RCP2.6 than under RCP8.5. One possible reason is that the extent and intensity of land cover change (e.g., cropland expansion) in some regions of EAS under RCP2.6 are projected to be stronger compared with that under RCP8.5 (Figures S4 and S5), which leads to higher extinction risks of some species. Overall, although land cover variables play relatively minor roles in determining current species distributions in both regions, future expansions of land cover are expected to play an increasingly important role in raising species extinction risks (Newbold, 2018; Newbold et al., 2015).

Species range size influences the resilience to human pressures and climate fluctuations and has been widely used to assess species extinction risk (Davies et al., 2009; IUCN, 2019). Building on the assumption of relatively similar sensitivity to environmental changes of the EAS–ENA disjunct genera due to niche conservatism (Qian & Ricklefs, 2004), we expect that the loss of suitable habitat would be different when facing different degrees of anthropogenic threats. As expected, species extinction risk is reduced with increasing range size in both regions. Compared with ENA, for most congeneric pairs, EAS has more species with small range size. Small-ranged species are more vulnerable to extinction under climatically unstable areas, as they often have small population sizes and are less likely to occupy remaining suitable habitats during climate oscillations (Jansson, 2003). This result highlights the importance of small-ranged species in the assessment of species extinction risk.

Consistent with previous studies (e.g., Hickling et al., 2005, 2006; Zhang et al., 2017), our results show that the largest species loss of

the disjunct plant genera was projected to be at low latitudes. Most regions at low latitudes are expected to be warmer in the 2070s (Figures S4 and S5), resulting in the loss of suitable habitats for these temperate-zone species. It is particularly important to note that an excess of species loss is expected in the mountain regions of southern and southwestern China. This is inconsistent with the findings by Tang et al. (2018) that reported that these regions continue to be the refuge of plant species under future climate changes. The discrepancy between the two studies may reflect differences in the plant groups covered, but potentially also the coarser spatial grain of our analyses. On the one hand, our work focuses on species in the EAS–ENA disjunct genera, while Tang et al. (2018) focused on relict plant species even though 8% of these species are the same as ours. For many species of the disjunct genera in EAS, the southern and southwestern mountains are low-latitude range boundaries that may be sensitive to climate warming and habitat loss, and the narrow habitat tolerances of the mountain flora, in conjunction with marginal habitats for many disjunct genera species, are likely to promote high rates of species decline (Franco et al., 2006; Thuiller et al., 2005). On the other hand, the relatively coarse grid scale of our study may not reliably account for habitat heterogeneity of mountains and hide potential refuges for species (Guisan & Theurillat, 2000; Thuiller et al., 2005). Although mountainous areas may have higher scope for providing microrefugia than those identified in the present study, their small size would still represent an increased vulnerability to pressures such as from further broad-scale climate change.

In summary, our results show that despite the overall high similarity in climatic sensitivity between the species of the EAS–ENA disjunct plant genera, the floras of these two regions would expect to have different fates under the future changes in climate and land cover, with higher extinction risk in EAS. An increasing number of species are projected to become vulnerable to anthropogenic changes in the coming decades (IPBES, 2019; Newbold, 2018; Peters et al., 2019). Here, we show that this vulnerability is not homogeneous across regions, with stronger pressures along with smaller range sizes behind the greater extinction risks in EAS. These results highlight that different environmental settings and pressures may cause species with similar sensitivity to have different future risks of extinction in different regions. From a conservation perspective, this calls for region-specific policies for conservation and restoration, with stronger efforts being needed in some regions. Meanwhile, our results also indicate that strong climate change may overwhelm any such regional differences in buffer capacity, and highlight the importance of minimizing future climate change under the ongoing acceleration of biodiversity crisis.

ACKNOWLEDGMENTS

We gratefully acknowledge financial support from the National Natural Science Foundation of China (no. 32071538) and Shanghai National Natural Science Foundation (no. 202007-202306) to J.Z., Aarhus Universitets Forskningsfond Grant (no. AUFF-F-2018-7-8) to A.O., and VILLUM FONDEN (VILLUM Investigator project “Biodiversity Dynamics in a Changing World”, grant 16549) to J.-C.S.

H.-J.S. was also supported by the China Scholarship Council. The manuscript greatly benefited from comments from Prof. Fangliang He during data analysis and writing. We thank Dr. Zhao Li for her help in land cover data as well as Dr. Wubing Xu and Dr. Wenyong Guo for their suggestions and discussions.

CONFLICT OF INTEREST

The authors declare no conflict of interest.

DATA AVAILABILITY STATEMENT

The data that support the findings of this study are available in Charkevitz (1985–1996), Flora of Korea Editorial Committee (2015–2016), Kubota et al. (2014), Lee (1980) and Lee (1996), Lu et al. (2018), and Nakamura et al. (2009).

ORCID

Houjuan Song  <https://orcid.org/0000-0003-0482-1933>

Alejandro Ordóñez  <https://orcid.org/0000-0003-2873-4551>

Jens-Christian Svenning  <https://orcid.org/0000-0002-3415-0862>

Hong Qian  <https://orcid.org/0000-0002-1381-7496>

Xue Yin  <https://orcid.org/0000-0003-1773-0467>

Lingfeng Mao  <https://orcid.org/0000-0002-2884-135X>

Tao Deng  <https://orcid.org/0000-0003-4163-3368>

Jian Zhang  <https://orcid.org/0000-0003-0589-6267>

REFERENCES

- Allouche, O., Tsoar, A., & Kadmon, R. (2006). Assessing the accuracy of species distribution models: Prevalence, kappa and the true skill statistic (TSS): Assessing the accuracy of distribution models. *Journal of Applied Ecology*, 43(6), 1223–1232. <https://doi.org/10.1111/j.1365-2664.2006.01214.x>
- Barbet-Massin, M., Jiguet, F., Albert, C. H., & Thuiller, W. (2012). Selecting pseudo-absences for species distribution models: How, where and how many? *Methods in Ecology and Evolution*, 3(2), 327–338. <https://doi.org/10.1111/j.2041-210X.2011.00172.x>
- Boufford, D. E., & Spongberg, S. A. (1983). Eastern Asian-eastern North American phytogeographical relationships – A history from the time of Linnaeus to the twentieth century. *Annals of the Missouri Botanical Garden*, 70(3), 423–439. <https://doi.org/10.2307/2992081>
- Cardinale, B. J., Gonzalez, A., Allington, G. R. H., & Loreau, M. (2018). Is local biodiversity declining or not? A summary of the debate over analysis of species richness time trends. *Biological Conservation*, 219, 175–183. <https://doi.org/10.1016/j.biocon.2017.12.021>
- Charkevitz, S. S. (1985–1996). *Plantae Vasculares Orientis Extremi Sovietici* (Vols. 1–8), Leningrad: Nauka Publishers.
- Chen, I.-C., Hill, J. K., Ohlemüller, R., Roy, D. B., & Thomas, C. D. (2011). Rapid range shifts of species associated with high levels of climate warming. *Science*, 333(6045), 1024–1026. <https://doi.org/10.1126/science.1206432>
- Collen, B., Bykova, E., Ling, S., Milner-Gulland, E. J., & Purvis, A. (2006). Extinction risk: A comparative analysis of central Asian vertebrates. *Biodiversity and Conservation*, 15(6), 1859–1871. <https://doi.org/10.1007/s10531-005-4303-6>
- Cribari-Neto, F., & Zeileis, A. (2010). Beta regression in R. *Journal of Statistical Software*, 34, 1–24.
- Davies, T. J., Purvis, A., & Gittleman, J. L. (2009). Quaternary climate change and the geographic ranges of mammals. *The American Naturalist*, 174(3), 297–307. <https://doi.org/10.1086/603614>
- Dawson, T. P., Jackson, S. T., House, J. I., Prentice, I. C., & Mace, G. M. (2011). Beyond predictions: Biodiversity conservation in a changing climate. *Science*, 332(6025), 53–58. <https://doi.org/10.1126/science.1200303>
- Dormann, C. F., Elith, J., Bacher, S., Buchmann, C., Carl, G., Carré, G., Marquéz, J. R. G., Gruber, B., Lafourcade, B., Leitão, P. J., Münkemüller, T., McClean, C., Osborne, P. E., Reineking, B., Schröder, B., Skidmore, A. K., Zurell, D., & Lautenbach, S. (2013). Collinearity: A review of methods to deal with it and a simulation study evaluating their performance. *Ecography*, 36(1), 27–46. <https://doi.org/10.1111/j.1600-0587.2012.07348.x>
- Elith, J., & Leathwick, J. R. (2009). Species distribution models: Ecological explanation and prediction across space and time. *Annual Review of Ecology, Evolution, and Systematics*, 40(1), 677–697. <https://doi.org/10.1146/annurev.ecolsys.110308.120159>
- Feng, G., Mao, L., Benito, B. M., Swenson, N. G., & Svenning, J.-C. (2017). Historical anthropogenic footprints in the distribution of threatened plants in China. *Biological Conservation*, 210, 3–8. <https://doi.org/10.1016/j.biocon.2016.05.038>
- Flora of Korea Editorial Committee. (2015–2016). *Flora of Korea* (Vol. 8), Korea: National Institute of Biological Resources, Ministry of Environment.
- Franco, A. M. A., Hill, J. K., Kitschke, C., Collingham, Y. C., Roy, D. B., Fox, R., Huntley, B., & Thomas, C. D. (2006). Impacts of climate warming and habitat loss on extinctions at species' low-latitude range boundaries. *Global Change Biology*, 12(8), 1545–1553. <https://doi.org/10.1111/j.1365-2486.2006.01180.x>
- Franklin, J., & Miller, J. A. (2010). *Mapping Species Distributions: Spatial Inference and Prediction*, Cambridge: Cambridge University Press, 212 pp.
- Gallien, L., Münkemüller, T., Albert, C. H., Boulangeat, I., & Thuiller, W. (2010). Predicting potential distributions of invasive species: Where to go from here? Predicting potential distributions of invasive species. *Diversity and Distributions*, 16(3), 331–342. <https://doi.org/10.1111/j.1472-4642.2010.00652.x>
- Guisan, A., & Theurillat, J. P. (2000). Assessing alpine plant vulnerability to climate change: A modeling perspective. *Integrated Assessment*, 1, 207–320. <https://doi.org/10.1023/A:1018912114948>
- Guo, Q. (1999). Ecological comparisons between Eastern Asia and North America: Historical and geographical perspectives. *Journal of Biogeography*, 26(2), 199–206. <https://doi.org/10.1046/j.1365-2699.1999.00290.x>
- Hadly, E. A., Spaeth, P. A., & Li, C. (2009). Niche conservatism above the species level. *Proceedings of the National Academy of Sciences of the United States of America*, 106(Supplement_2), 19707–19714. <https://doi.org/10.1073/pnas.0901648106>
- Hannah, L., Roehrdanz, P. R., Marquet, P. A., Enquist, B. J., Midgley, G., Foden, W., Lovett, J. C., Corlett, R. T., Corcoran, D., Butchart, S. H. M., Boyle, B., Feng, X., Maitner, B., Fajardo, J., McGill, B. J., Merow, C., Morueta-Holme, N., Newman, E. A., Park, D. S., ... Svenning, J. (2020). 30% land conservation and climate action reduces tropical extinction risk by more than 50%. *Ecography*, 43, 943–953. <https://doi.org/10.1111/ecog.05166>
- Hickling, R., Roy, D. B., Hill, J. K., Fox, R., & Thomas, C. D. (2006). The distributions of a wide range of taxonomic groups are expanding polewards. *Global Change Biology*, 12(3), 450–455. <https://doi.org/10.1111/j.1365-2486.2006.01116.x>
- Hickling, R., Roy, D. B., Hill, J. K., & Thomas, C. D. (2005). A northward shift of range margins in British Odonata. *Global Change Biology*, 11(3), 502–506. <https://doi.org/10.1111/j.1365-2486.2005.00904.x>
- Hijmans, R. J., Cameron, S. E., Parra, J. L., Jones, P. G., & Jarvis, A. (2005). Very high resolution interpolated climate surfaces for global land areas. *International Journal of Climatology*, 25(15), 1965–1978. <https://doi.org/10.1002/joc.1276>
- Hurttt, G. C., Chini, L. P., Frolking, S., Betts, R. A., Feddema, J., Fischer, G., Fisk, J. P., Hibbard, K., Houghton, R. A., Janetos, A., Jones, C.

- D., Kindermann, G., Kinoshita, T., Klein Goldewijk, K., Riahi, K., Shevliakova, E., Smith, S., Stehfest, E., Thomson, A., ... Wang, Y. P. (2011). Harmonization of land-use scenarios for the period 1500–2100: 600 years of global gridded annual land-use transitions, wood harvest, and resulting secondary lands. *Climatic Change*, 109(1–2), 117–161. <https://doi.org/10.1007/s10584-011-0153-2>
- IPBES. (2019). *Global assessment report on biodiversity and ecosystem services of the Intergovernmental Science-Policy Platform on Biodiversity and Ecosystem Services* (pp. 6–7). E. S. Brondizio, J. Settele, S. Díaz, & H. T. Ngo (Eds.). Bonn, Germany: IPBES Secretariat.
- IUCN. (2019). *The IUCN Red List of Threatened Species*. Retrieved from <http://www.iucnredlist.org>
- Jansson, R. (2003). Global patterns in endemism explained by past climatic change. *Proceedings of the Royal Society of London. Series B: Biological Sciences*, 270(1515), 583–590. <https://doi.org/10.1098/rspb.2002.2283>
- Kling, M. M., Auer, S. L., Comer, P. J., Ackerly, D. D., & Hamilton, H. (2020). Multiple axes of ecological vulnerability to climate change. *Global Change Biology*, 26, 2798–2813. <https://doi.org/10.1111/gcb.15008>
- Kremen, C., Cameron, A., Moilanen, A., Phillips, S. J., Thomas, C. D., Beentje, H., Dransfield, J., Fisher, B. L., Glaw, F., Good, T. C., Harper, G. J., Hijmans, R. J., Lees, D. C., Louis, E., Nussbaum, R. A., Raxworthy, C. J., Razafimpahanana, A., Schatz, G. E., Vences, M., ... Zjhra, M. L. (2008). Aligning conservation priorities across taxa in Madagascar with high-resolution planning tools. *Science*, 320(5873), 222–226. <https://doi.org/10.1126/science.1155193>
- Kubota, Y., Hirao, T., Fujii, S., Shiono, T., & Kusumoto, B. (2014). Beta diversity of woody plants in the Japanese archipelago: The roles of geohistorical and ecological processes. *Journal of Biogeography*, 41(7), 1267–1276. <https://doi.org/10.1111/jbi.12290>
- Lee, T. B. (1980). *Illustrated Flora of Korea*, Seoul: Hyangmunsa Publisher.
- Lee, W. T. (1996). *Lineamenta Florae Koreae*, Seoul: Academic Publisher.
- Loarie, S. R., Duffy, P. B., Hamilton, H., Asner, G. P., Field, C. B., & Ackerly, D. D. (2009). The velocity of climate change. *Nature*, 462(7276), 1052–1055. <https://doi.org/10.1038/nature08649>
- Lu, L.-M., Mao, L.-F., Yang, T., Ye, J.-F., Liu, B., Li, H.-L., Sun, M., Miller, J. T., Mathews, S., Hu, H.-H., Niu, Y.-T., Peng, D.-X., Chen, Y.-H., Smith, S. A., Chen, M., Xiang, K.-L., Le, C.-T., Dang, V.-C., Lu, A.-M., ... Chen, Z.-D. (2018). Evolutionary history of the angiosperm flora of China. *Nature*, 554(7691), 234–238. <https://doi.org/10.1038/nature25485>
- Moat, J., Gole, T. W., & Davis, A. P. (2019). Least concern to endangered: Applying climate change projections profoundly influences the extinction risk assessment for wild Arabica coffee. *Global Change Biology*, 25(2), 390–403. <https://doi.org/10.1111/gcb.14341>
- Nakamura, K., Suwa, R., Denda, T., & Yokota, M. (2009). Geohistorical and current environmental influences on floristic differentiation in the Ryukyu Archipelago, Japan. *Journal of Biogeography*, 36(5), 919–928. <https://doi.org/10.1111/j.1365-2699.2008.02057.x>
- Newbold, T. (2018). Future effects of climate and land-use change on terrestrial vertebrate community diversity under different scenarios. *Proceedings of the Royal Society B: Biological Sciences*, 285(1881), 20180792. <https://doi.org/10.1098/rspb.2018.0792>
- Newbold, T., Adams, G. L., Albaladejo Robles, G., Boakes, E. H., Braga Ferreira, G., Chapman, A. S. A., Etard, A., Gibb, R., Millard, J., Outhwaite, C. L., & Williams, J. J. (2019). Climate and land-use change homogenise terrestrial biodiversity, with consequences for ecosystem functioning and human well-being. *Emerging Topics in Life Sciences*, 3(2), 207–219. <https://doi.org/10.1042/ETLS20180135>
- Newbold, T., Hudson, L. N., Hill, S. L. L., Contu, S., Lysenko, I., Senior, R. A., Börger, L., Bennett, D. J., Choimes, A., Collen, B., Day, J., De Palma, A., Díaz, S., Echeverria-Londoño, S., Edgar, M. J., Feldman, A., Garon, M., Harrison, M. L. K., Alhousseini, T., ... Purvis, A. (2015). Global effects of land use on local terrestrial biodiversity. *Nature*, 520(7545), 45–50. <https://doi.org/10.1038/nature14324>
- Parmesan, C. (2006). Ecological and evolutionary responses to recent climate change. *Annual Review of Ecology, Evolution, and Systematics*, 37(1), 637–669. <https://doi.org/10.1146/annurev.ecolsys.37.091305.110100>
- Pearson, R. G., Raxworthy, C. J., Nakamura, M., & Townsend Peterson, A. (2007). Predicting species distributions from small numbers of occurrence records: A test case using cryptic geckos in Madagascar. *Journal of Biogeography*, 34(1), 102–117. <https://doi.org/10.1111/j.1365-2699.2006.01594.x>
- Pelletier, T. A., Carstens, B. C., Tank, D. C., Sullivan, J., & Espíndola, A. (2018). Predicting plant conservation priorities on a global scale. *Proceedings of the National Academy of Sciences of the United States of America*, 115(51), 13027–13032. <https://doi.org/10.1073/pnas.1804098115>
- Peters, M. K., Hemp, A., Appelhans, T., Becker, J. N., Behler, C., Classen, A., Detsch, F., Ensslin, A., Ferger, S. W., Frederiksen, S. B., Gebert, F., Gerschlaue, F., Gütlein, A., Helbig-Bonitz, M., Hemp, C., Kindeketa, W. J., Kühnel, A., Mayr, A. V., Mwangomo, E., ... Steffan-Dewenter, I. (2019). Climate–land-use interactions shape tropical mountain biodiversity and ecosystem functions. *Nature*, 568, 88–92. <https://doi.org/10.1038/s41586-019-1048-z>
- Qian, H., Fridley, J. D., & Palmer, M. W. (2007). The latitudinal gradient of species-area relationships for vascular plants of North America. *The American Naturalist*, 170(5), 690–701. <https://doi.org/10.1086/521960>
- Qian, H., Jin, Y., & Ricklefs, R. E. (2017). Phylogenetic diversity anomaly in angiosperms between eastern Asia and eastern North America. *Proceedings of the National Academy of Sciences of the United States of America*, 114(43), 11452–11457. <https://doi.org/10.1073/pnas.1703985114>
- Qian, H., & Ricklefs, R. E. (2000). Large-scale processes and the Asian bias in species diversity of temperate plants. *Nature*, 407(6801), 180–182. <https://doi.org/10.1038/35025052>
- Qian, H., & Ricklefs, R. E. (2004). Geographical distribution and ecological conservatism of disjunct genera of vascular plants in eastern Asia and eastern North America. *Journal of Ecology*, 92(2), 253–265. <https://doi.org/10.1111/j.0022-0477.2004.00868.x>
- Qian, H., White, P. S., & Song, J.-S. (2007). Effects of regional vs. ecological factors on plant species richness: An intercontinental analysis. *Ecology*, 88(6), 1440–1453. <https://doi.org/10.1890/06-0916>
- R Core Team. (2019). *R: A language and environment for statistical computing*, Vienna, Austria: R Foundation for Statistical Computing. Retrieved from <https://www.R-project.org/>
- Rahbek, C., & Graves, G. R. (2001). Multiscale assessment of patterns of avian species richness. *Proceedings of the National Academy of Sciences of the United States of America*, 98(8), 4534–4539. <https://doi.org/10.1073/pnas.071034898>
- Razgour, O., Forester, B., Taggart, J. B., Bekaert, M., Juste, J., Ibáñez, C., Puechmille, S. J., Novella-Fernandez, R., Alberdi, A., & Manel, S. (2019). Considering adaptive genetic variation in climate change vulnerability assessment reduces species range loss projections. *Proceedings of the National Academy of Sciences of the United States of America*, 116(21), 10418–10423. <https://doi.org/10.1073/pnas.1820663116>
- Ricklefs, R. E., & Latham, R. E. (1992). Intercontinental correlation of geographical ranges suggests stasis in ecological traits of relict genera of temperate perennial herbs. *The American Naturalist*, 139(6), 1305–1321. <https://doi.org/10.1086/285388>
- Rosenzweig, C., Karoly, D., Vicarelli, M., Neofotis, P., Wu, Q., Casassa, G., Menzel, A., Root, T. L., Estrella, N., Seguin, B., Tryjanowski, P., Liu, C., Rawlins, S., & Imeson, A. (2008). Attributing physical and biological impacts to anthropogenic climate change. *Nature*, 453(7193), 353–357. <https://doi.org/10.1038/nature06937>
- Sax, D. F., & Gaines, S. D. (2003). Species diversity: From global decreases to local increases. *Trends in Ecology & Evolution*, 18(11), 561–566. [https://doi.org/10.1016/S0169-5347\(03\)00224-6](https://doi.org/10.1016/S0169-5347(03)00224-6)

- Seto, K. C., Fragkias, M., Güneralp, B., & Reilly, M. K. (2011). A meta-analysis of global urban land expansion. *PLoS One*, 6(8), e23777. <https://doi.org/10.1371/journal.pone.0023777>
- Seto, K. C., Güneralp, B., & Hutyra, L. R. (2012). Global forecasts of urban expansion to 2030 and direct impacts on biodiversity and carbon pools. *Proceedings of the National Academy of Sciences of the United States of America*, 109(40), 16083–16088. <https://doi.org/10.1073/pnas.1211658109>
- Smith, S. A., & Brown, J. W. (2018). Constructing a broadly inclusive seed plant phylogeny. *American Journal of Botany*, 105(3), 302–314. <https://doi.org/10.1002/ajb2.1019>
- Stralberg, D., Matsuoka, S. M., Hamann, A., Bayne, E. M., Sólymos, P., Schmiegelow, F. K. A., Wang, X., Cumming, S. G., & Song, S. J. (2015). Projecting boreal bird responses to climate change: The signal exceeds the noise. *Ecological Applications*, 25(1), 52–69. <https://doi.org/10.1890/13-2289.1>
- Tang, C. Q., Matsui, T., Ohashi, H., Dong, Y.-F., Momohara, A., Herrando-Moraira, S., Qian, S., Yang, Y., Ohsawa, M., Luu, H. T., Grote, P. J., Krestov, P. V., LePage, B., Werger, M., Robertson, K., Hobohm, C., Wang, C.-Y., Peng, M.-C., Chen, X. I., ... López-Pujol, J. (2018). Identifying long-term stable refugia for relict plant species in East Asia. *Nature Communications*, 9(1), 4488. <https://doi.org/10.1038/s41467-018-06837-3>
- Thomas, C. D., Cameron, A., Green, R. E., Bakkenes, M., Beaumont, L. J., Collingham, Y. C., Erasmus, B. F. N., de Siqueira, M. F., Grainger, A., Hannah, L., Hughes, L., Huntley, B., van Jaarsveld, A. S., Midgley, G. F., Miles, L., Ortega-Huerta, M. A., Peterson, A. T., Phillips, O. L., & Williams, S. E. (2004). Extinction risk from climate change. *Nature*, 427, 145–148. <https://doi.org/10.1038/nature02121>
- Thuiller, W., Lafourcade, B., Engler, R., & Araújo, M. B. (2009). BIOMOD – A platform for ensemble forecasting of species distributions. *Ecography*, 32(3), 369–373. <https://doi.org/10.1111/j.1600-0587.2008.05742.x>
- Thuiller, W., Lavergne, S., Roquet, C., Boulangeat, I., Lafourcade, B., & Araújo, M. B. (2011). Consequences of climate change on the tree of life in Europe. *Nature*, 470(7335), 531–534. <https://doi.org/10.1038/nature09705>
- Thuiller, W., Lavorel, S., & Araújo, M. B. (2005). Niche properties and geographical extent as predictors of species sensitivity to climate change. *Global Ecology and Biogeography*, 14(4), 347–357. <https://doi.org/10.1111/j.1466-822X.2005.00162.x>
- Thuiller, W., Lavorel, S., Araujo, M. B., Sykes, M. T., & Prentice, I. C. (2005). Climate change threats to plant diversity in Europe. *Proceedings of the National Academy of Sciences of the United States of America*, 102(23), 8245–8250. <https://doi.org/10.1073/pnas.0409902102>
- Tiffney, B. H. (1985). Perspectives on the origin of the floristic similarity between Eastern Asia and Eastern North America. *Journal of the Arnold Arboretum*, 66, 73–94. <https://doi.org/10.5962/bhl.part.13179>
- Titeux, N., Henle, K., Mihoub, J.-B., Regos, A., Geijzendorffer, I. R., Cramer, W., Verburg, P. H., & Brotons, L. (2016). Biodiversity scenarios neglect future land-use changes. *Global Change Biology*, 22(7), 2505–2515. <https://doi.org/10.1111/gcb.13272>
- Trisos, C. H., Merow, C., & Pigot, A. L. (2020). The projected timing of abrupt ecological disruption from climate change. *Nature*, 580, 496–501. <https://doi.org/10.1038/s41586-020-2189-9>
- Urban, M. C. (2015). Accelerating extinction risk from climate change. *Science*, 348(6234), 571–573. <https://doi.org/10.1126/science.aaa4984>
- VanDerWal, J., Shoo, L. P., Graham, C., & Williams, S. E. (2009). Selecting pseudo-absence data for presence-only distribution modeling: How far should you stray from what you know? *Ecological Modelling*, 220(4), 589–594. <https://doi.org/10.1016/j.ecolmodel.2008.11.010>
- Wen, J. (1999). Evolution of eastern Asian and eastern North American disjunct distributions in flowering plants. *Annual Review of Ecology and Systematics*, 30, 421–455. <https://doi.org/10.1146/annurev.ecolsys.30.1.421>
- Wolfe, J. A. (1975). Some aspects of plant geography of the Northern hemisphere during the Late Cretaceous and Tertiary. *Annals of the Missouri Botanical Garden*, 62(2), 264. <https://doi.org/10.2307/2395198>
- Zhang, J., Nielsen, S. E., Chen, Y., Georges, D., Qin, Y., Wang, S.-S., Svenning, J.-C., & Thuiller, W. (2017). Extinction risk of North American seed plants elevated by climate and land-use change. *Journal of Applied Ecology*, 54(1), 303–312. <https://doi.org/10.1111/1365-2664.12701>

SUPPORTING INFORMATION

Additional supporting information may be found online in the Supporting Information section.

How to cite this article: Song H, Ordonez A, Svenning J, et al. Regional disparity in extinction risk: Comparison of disjunct plant genera between eastern Asia and eastern North America. *Glob Change Biol*. 2021;27:1904–1914. <https://doi.org/10.1111/gcb.15525>